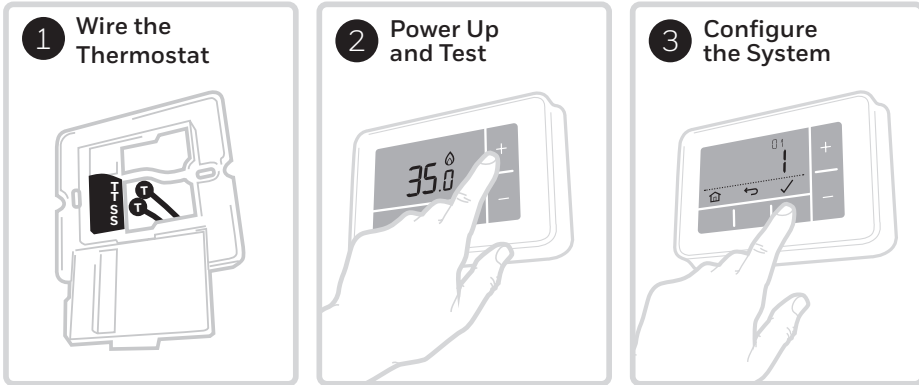


EN Quick Start Installation Guide

Compatible with OpenTherm appliances only.
Not compatible with 230V boilers, zone valve applications or 230V electric heating.

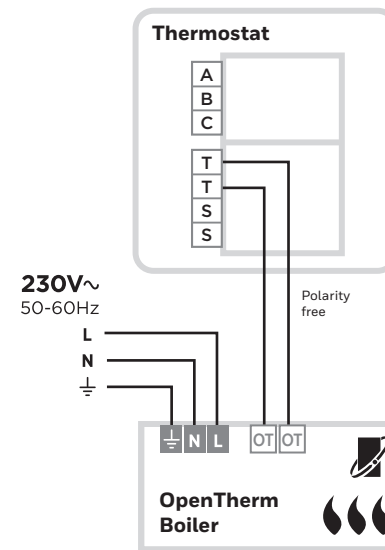


Installation in 3 steps...



Must be installed by a competent person.
To ensure your safety make sure the mains power is switched OFF before accessing wiring.

OpenTherm Boiler



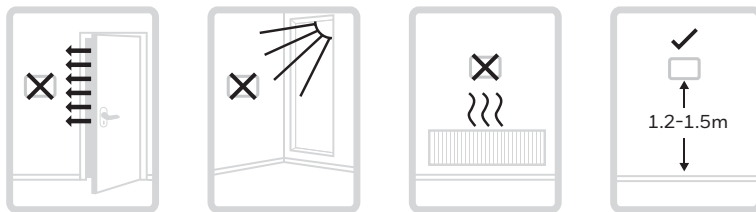
To prevent a short circuit from a loose wire -

- **When using multi-core cables:** Only remove enough outer insulation to allow secure fixing of the cores into the terminal block.
- **When using single core cables:** Secure them together with a cable tie as close as possible to the terminal block.

32318058-001 D

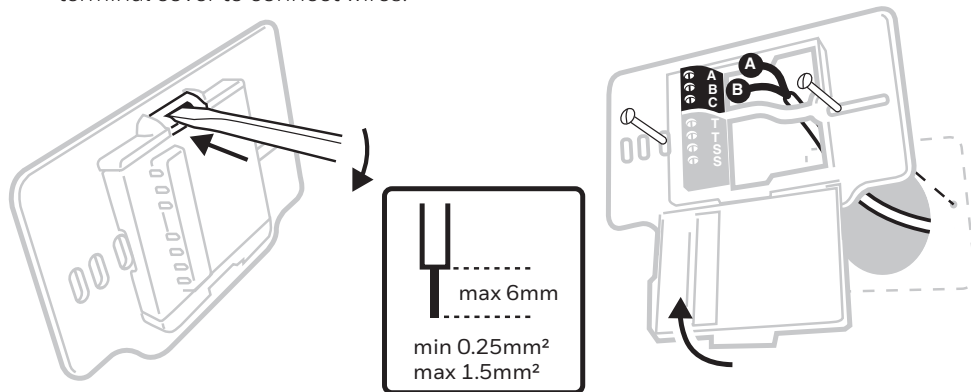
1 Wire the Thermostat

Find a suitable wall location away from draughts, direct sunlight or other heat sources, and where cables can be run from the boiler to the thermostat.



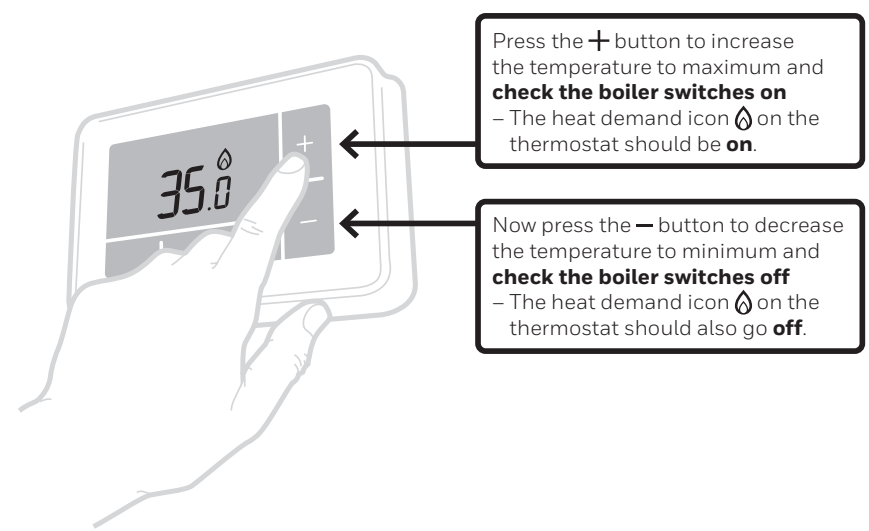
A) Separate the wallplate from the thermostat, and using a screwdriver open the wallplate terminal cover to connect wires.

B) Connect wires according to wiring diagrams and clip the cover closed.



2 Power Up and Test

Power Up the Heating System and do a quick functional test on the thermostat to check that it switches the boiler.



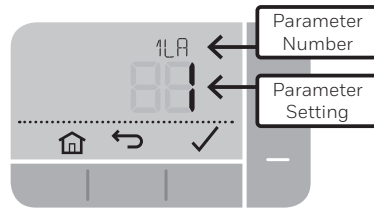
Press the **+** button to increase the temperature to maximum and **check the boiler switches on** - The heat demand icon on the thermostat should be **on**.

Now press the **-** button to decrease the temperature to minimum and **check the boiler switches off** - The heat demand icon on the thermostat should also go **off**.

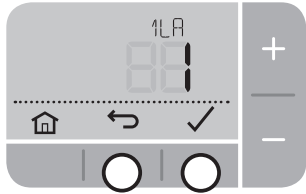
3 Configure the System

Specific settings for the thermostat and heating system can be configured in the advanced menu.

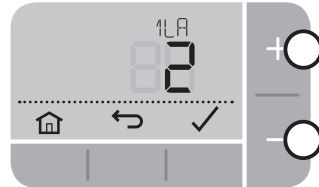
Press and hold and then buttons together until the display changes (approx. **3 seconds**).



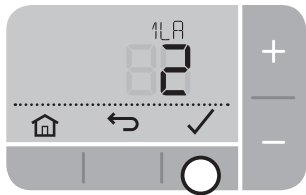
A) Press and buttons to navigate through the parameter list.



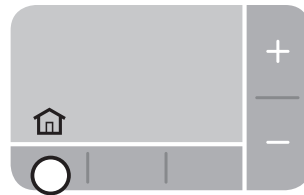
B) Press and buttons to change a parameter.



C) Press button to save the change (or press to cancel the change).



D) Press button to exit advanced menu and save any changes.



Parameters

N°	Description	Settings (default in bold)
1 LR	Language	1 = EN , 2 = NL, 3 = FR
2 CR	Cycle Rate	6
4 LL	Lower Temperature Limit	5 - 21 (°C)
5 UL	Upper Temperature Limit	21 - 35 (°C)
6 SO	Schedule options	1 = 7 day (different schedule each day of the week) 2 = 5 + 2 day (weekday + weekend schedule) 3 = 1 day (same schedule every day)
7 NP	Number of periods per day	4 or 6
8 SS	Wired Remote Sensor	0 = No Remote Sensor , 1 = Wired Remote Sensor
9 LC	Fail Safe mode	0 = Boiler off , 1 = Boiler 20% on / 80% off
10 BL	Backlight	0 = Off, 1 = On (only on demand)
11 CL	Clock Format	0 = 24 hr , 1 = AM/PM
12 DS	Daylight Saving time change	0 = Off, 1 = Auto
13 TO	Temperature Display Offset	+/-1.5°C
15 SD	Restore Schedule Defaults	0 , 1 = reset
16 FS	Restore Factory Settings	0 , 1 = reset
17 OP	Optimisation	0=Disabled , 1=Enabled

OpenTherm Data ID's

An OpenTherm boiler can report alerts back to the Thermostat. You can view these in the 'OpenTherm® boiler alerts' menu.

The OpenTherm Data ID's appear after the installer parameters (see the table above).

N°	Description	Settings (default in bold)
OT1	Low load control	0 = Off, 1 = On
OT2	Control setpoint	5 - 99°C
OT3	Supply water temperature	5 - 99°C
OT4	Return water temperature	5 - 99°C
OT5	Max. supply water temperature	5 - 99°C
OT6	Hot water temperature	5 - 99°C
OT7	Hot water setpoint	5 - 99°C
OT8	Actual power	0 - 99%
OT9	Water pressure	0.0 - 9.9
OT10	OTC control	0 = Off , 1 = On
OT11	OTC curve	4 - 40 (16)
OT12	Room compensation	0 = Off , 1 = On

Conforms to protection requirements of the following directives:
EMC: 2014/30/EU and **LVD: 2014/35/EU**
 The full text of the EU declaration of conformity is available at the following internet address: <https://hwlhome.co/DoC>

ErP: Class V (+3%), (EU) 811/2013

WEEE Directive 2012/19/EU - Waste Electrical and Electronic Equipment directive

At the end of the product life dispose of the packaging and product in a corresponding recycling centre. Do not dispose of the unit with the usual domestic refuse. Do not burn the product.



Troubleshooting

What's happening?	What it could mean...	How to fix it...
Thermostat display is blank	No power to heating system	Check heating system is powered
	Faulty wiring connection	Check wiring at thermostat and boiler terminals
Display = --	Faulty temperature sensor	Replace thermostat or check wiring to remote temperature sensor if fitted
Thermostat shows heat demand but boiler doesn't respond	Boiler (water) already at temperature	Normal behaviour - wait for water temperature to drop
	Faulty wiring connection	Check wiring at thermostat and boiler terminals

resideo

Pittway Sarl, Z.A. La Pièce 4,
1180 Rolle, Switzerland

www.resideo.com Country of origin : UK

© 2020 Resideo Technologies, Inc. All rights reserved.
 The Honeywell Home trademark is used under license from Honeywell International Inc.
 This product is manufactured by Resideo Technologies, Inc. and its affiliates.